



Catalog Number: 40592-R190

EliteRmab® is a registered trademark of Sino Biological Inc.

GENERAL INFORMATION	
Immunogen:	Recombinant SARS-CoV-2 Spike RBD-mFc Protein (Catalog#40592-V05H)
Preparation	This antibody was obtained from a rabbit immunized with purified, recombinant SARS-CoV-2 Spike (Catalog#40592-V05H; YP_009724390.1; Arg319-Phe541).
Ig Type:	Rabbit IgG
Clone ID:	190
Specificity:	SARS-CoV-2 Spike RBD
	<p>Has cross-reactivity in ELISA with SARS-CoV-2 Spike S1+S2 ECD Protein (Cat# 40589-V08B1) SARS-CoV-2 Spike S1 Protein (Cat# 40591-V05H1) SARS-CoV-2 Spike S1 Protein (Cat# 40591-V08H) SARS-CoV-2 Spike RBD Protein (Cat# 40592-V05H) SARS-CoV-2 Spike RBD Protein (Cat# 40592-V08B) SARS-CoV Spike S1+S2 ECD Protein (Cat# 40634-V08B)</p> <p>No cross-reactivity in ELISA with MERS-CoV Spike S1+S2 ECD Protein (Cat# 40069-V08B) HCoV-NL63 Spike S1+S2 ECD Protein (Cat# 40604-V08B) HCoV-229E Spike S1+S2 ECD Protein (Cat# 40605-V08B) HCoV-HKU1 (isolate N5) Spike S1+S2 ECD Protein (Cat# 40606-V08B) HCoV-OC43 Spike S1+S2 ECD Protein (Cat# 40607-V08B)</p>
Formulation:	0.2 µm filtered solution in PBS
Storage:	This antibody can be stored at 2°C-8°C for one month without detectable loss of activity. Antibody products are stable for twelve months from date of receipt when stored at -20°C to -80°C. Preservative-Free. Avoid repeated freeze-thaw cycles.
Alternative Names:	Spike
APPLICATIONS	
Applications:	ELISA,FCM,ELISA(Cap)
	IHC, FCM, IF, IP et al. applications haven't been validated. (Antibody's applications haven't been validated with corresponding virus positive samples. Optimal concentrations/dilutions should be determined by the end user.)
RECOMMENDED CONCENTRATION	
ELISA	ELISA: 0.1-0.2 µg/mL
FCM	FCM: 1:25-1:100
Sandwich ELISA (Capture Ab)	ELISA(Cap): 1:250-1:2000 In a sandwich ELISA, Cat# 40592-R190 can be used as capture antibody when paired with Cat# 40591-MM41.

Please Note: Optimal concentrations/dilutions should be determined by the end user.**For Research Use Only. Not for use in diagnostic or therapeutic procedures.**

Tel: +86-400-890-9989 (Global), +1-215-583-7898 (USA), +49(0)6196 9678656 (Europe)

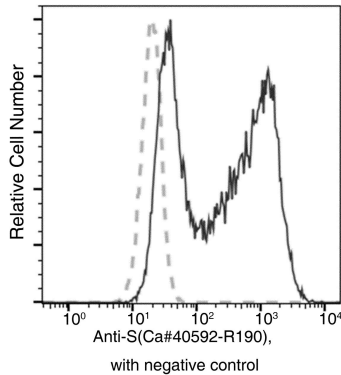
Website: <http://www.sinobiological.com>

SARS-CoV-2 Spike Antibody, Rabbit MAb



Catalog Number: 40592-R190

EliteRmab® is a registered trademark of Sino Biological Inc.



Flow cytometric analysis of SARS-COV-2 Spike overexpressed HEK293 Cells were stained with purified anti-SARS-COV-2 Spike Rabbit MAb, then a FITC-conjugated second step antibody. The fluorescence histograms were derived from gated events with the forward and side light-scatter characteristics of intact cells.

For Research Use Only. Not for use in diagnostic or therapeutic procedures.

Tel: +86-400-890-9989 (Global), +1-215-583-7898 (USA), +49(0)6196 9678656 (Europe)

Website: <http://www.sinobiological.com>