

# Coronavirus Nucleocapsid Antibody, Rabbit PAb, Antigen Affinity Purified



Sino Biological  
Biological Solution Specialist

Catalog Number: 40640-T62

## GENERAL INFORMATION

<b>Immunogen:</b>	Recombinant Human coronavirus (HCoV-229E) Nucleoprotein / NP Protein (Catalog#40640-V07E)
<b>Preparation</b>	Produced in rabbits immunized with purified, recombinant Human coronavirus (HCoV-229E) Nucleoprotein / NP ( Catalog#40640-V07E; NP_073556.1; Met1-Asn389). Coronavirus Nucleocapsid specific IgG was purified by Human coronavirus (HCoV-229E) Nucleoprotein / NP affinity chromatography.
<b>Ig Type:</b>	Rabbit IgG
<b>Specificity:</b>	Human coronavirus (HCoV-229E) Nucleoprotein / NP
<b>Formulation:</b>	0.2 µm filtered solution in PBS
<b>Storage:</b>	This antibody can be stored at 2°C-8°C for one month without detectable loss of activity. Antibody products are stable for twelve months from date of receipt when stored at -20°C to -80°C. Preservative-Free. Avoid repeated freeze-thaw cycles.
<b>Alternative Names:</b>	NP-CoV

## APPLICATIONS

<b>Applications:</b>	WB,ELISA
	IHC, FCM, IF, IP et al. applications haven't been validated. (Antibody's applications haven't been validated with corresponding virus positive samples. Optimal concentrations/dilutions should be determined by the end user.)

## RECOMMENDED CONCENTRATION

<b>Western Blot</b>	WB: 1:2000-1:10000
<b>ELISA</b>	ELISA: 1:5000-1:10000 This antibody can be used at 1:5000-1:10000 with the appropriate secondary reagents to detect Human coronavirus (HCoV-229E) Nucleoprotein / NP.

***Please Note: Optimal concentrations/dilutions should be determined by the end user.***

**For Research Use Only. Not for use in diagnostic or therapeutic procedures.**

**Tel: +86-400-890-9989 (Global), +1-215-583-7898 (USA), +49(0)6196 9678656 (Europe)**

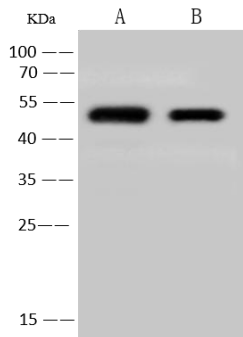
**Website: <http://www.sinobiological.com>**

# Coronavirus Nucleocapsid Antibody, Rabbit PAb, Antigen Affinity Purified



Sino Biological  
Biological Solution Specialist

Catalog Number: 40640-T62



Anti-HCoV 229E NP rabbit polyclonal antibody  
at 1:2000 dilution.

Sample: Human coronavirus (HCoV-229E)  
Nucleoprotein / NP Protein

Lane A: 5ng

Lane B: 1ng

Secondary

Goat Anti-Rabbit IgG (H+L)/HRP at 1/10000  
dilution

Developed using the ECL technique.

Performed under reducing conditions.

**For Research Use Only. Not for use in diagnostic or therapeutic procedures.**

**Tel: +86-400-890-9989 (Global), +1-215-583-7898 (USA), +49(0)6196 9678656 (Europe)**

**Website: <http://www.sinobiological.com>**