

Coronavirus Nucleocapsid Antibody, Rabbit PAb, Antigen Affinity Purified



Sino Biological
Biological Solution Specialist

Catalog Number: 40642-T62

GENERAL INFORMATION

| | |
|---------------------------|--|
| Immunogen: | Recombinant Human coronavirus (HCoV-HKU1) Nucleoprotein / NP Protein (Catalog#40642-V07E) |
| Preparation | Produced in rabbits immunized with purified, recombinant Human coronavirus (HCoV-HKU1) Nucleoprotein / NP (Catalog#40642-V07E; YP_173242.1; Met1-Ala441). Coronavirus Nucleocapsid specific IgG was purified by Human coronavirus (HCoV-HKU1) Nucleoprotein / NP affinity chromatography. |
| Ig Type: | Rabbit IgG |
| Specificity: | Human coronavirus (HCoV-HKU1) Nucleoprotein / NP |
| Formulation: | 0.2 µm filtered solution in PBS |
| Storage: | This antibody can be stored at 2°C-8°C for one month without detectable loss of activity. Antibody products are stable for twelve months from date of receipt when stored at -20°C to -80°C. Preservative-Free. Avoid repeated freeze-thaw cycles. |
| Alternative Names: | NP-CoV |

APPLICATIONS

| | |
|----------------------|--|
| Applications: | WB, ELISA |
| | IHC, FCM, IF, IP et al. applications haven't been validated. (Antibody's applications haven't been validated with corresponding virus positive samples. Optimal concentrations/dilutions should be determined by the end user.) |

RECOMMENDED CONCENTRATION

| | |
|---------------------|--|
| Western Blot | WB: 1:2000-1:10000 |
| ELISA | ELISA: 1:5000-1:10000 This antibody can be used at 1:5000-1:10000 with the appropriate secondary reagents to detect Human coronavirus (HCoV-HKU1) Nucleoprotein / NP. |

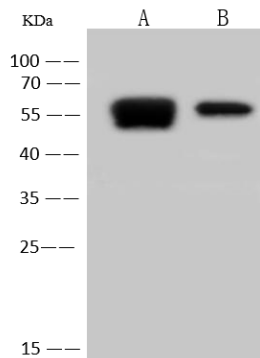
Please Note: Optimal concentrations/dilutions should be determined by the end user.

Coronavirus Nucleocapsid Antibody, Rabbit PAb, Antigen Affinity Purified



Sino Biological
Biological Solution Specialist

Catalog Number: 40642-T62



Anti-HCoV HKU1 NP rabbit polyclonal antibody at 1:2000 dilution.

Sample: Human coronavirus (HCoV-HKU1)
Nucleoprotein / NP Protein

Lane A: 5ng

Lane B: 1ng

Secondary

Goat Anti-Rabbit IgG (H+L)/HRP at 1/10000 dilution

Developed using the ECL technique.
Performed under reducing conditions.

For Research Use Only. Not for use in diagnostic or therapeutic procedures.

Tel: +86-400-890-9989 (Global), +1-215-583-7898 (USA), +49(0)6196 9678656 (Europe)

Website: <http://www.sinobiological.com>