

**CD62L / L-Selectin / SELL Antibody,  
Rabbit MAb**

Catalog Number: 50045-R122

EliteRmab® is a registered trademark of Sino Biological Inc.

| GENERAL INFORMATION       |   |
|---------------------------|---|
| <b>Immunogen:</b>         | Recombinant Mouse CD62L / L-Selectin / SELL Protein (Catalog#50045-M08H)  |
| <b>Preparation</b>        | This antibody was obtained from a rabbit immunized with purified, recombinant Mouse CD62L / L-Selectin / SELL (rM CD62L / L-Selectin / SELL; Catalog#50045-M08H; NP_035476.1; Met1-Asn332).   |
| <b>Ig Type:</b>           | Rabbit IgG  |
| <b>Clone ID:</b>          | 122   |
| <b>Specificity:</b>       | Mouse CD62L / L-Selectin / SELL   |
| <b>Formulation:</b>       | 0.2 µm filtered solution in PBS   |
| <b>Storage:</b>           | This antibody can be stored at 2°C-8°C for one month without detectable loss of activity. Antibody products are stable for twelve months from date of receipt when stored at -20°C to -80°C. Preservative-Free.<br>Sodium azide is recommended to avoid contamination (final concentration 0.05%-0.1%). It is toxic to cells and should be disposed of properly. Avoid repeated freeze-thaw cycles. |
| APPLICATIONS              |   |
| <b>Applications:</b>      | IHC-P   |
| RECOMMENDED CONCENTRATION |   |
| <b>IHC-P</b>              | IHC-P: 1:100-1:500  |

***Please Note: Optimal concentrations/dilutions should be determined by the end user.***

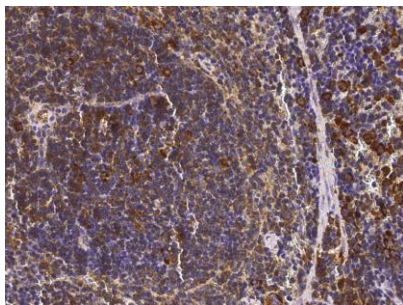
## CD62L / L-Selectin / SELL Antibody, Rabbit MAb

Catalog Number: 50045-R122



Sino Biological  
Biological Solution Specialist

EliteRmab® is a registered trademark of Sino Biological Inc.



Immunochemical staining of mouse SELL in mouse spleen with rabbit monoclonal antibody (1:200, formalin-fixed paraffin embedded sections).