

CD62L / L-Selectin / SELL Antibody (PE), Rabbit MAb

Catalog Number: 50045-R414-P

EliteRmab® is a registered trademark of Sino Biological Inc.

GENERAL INFORMATION

Immunogen:	Recombinant Mouse SELL / CD62L / L-selectin protein (Catalog#50045-M08H)
Reagents:	PE-conjugated Rabbit monoclonal antibody
Preparation	This antibody was obtained from a rabbit immunized with purified, recombinant Mouse SELL / CD62L / L-selectin (rM SELL / CD62L / L-selectin; Catalog#50045-M08H; NP_035476.1; Met 1-Asn 332) and conjugated with PE under optimum conditions, the unreacted PE was removed.
Ig Type:	Rabbit IgG
Clone ID:	414
Specificity:	Mouse SELL / CD62L / L-selectin
Concentration:	10 µl/Test, 0.1 mg/ml
Formulation:	PBS solution containing 0.5% BSA and 0.09% sodium azide
Storage:	This antibody can be stored at 2°C-8°C for twelve months without detectable loss of activity. Protected from prolonged exposure to light. Do not freeze ! Sodium azide is toxic to cells and should be disposed of properly. Flush with large volumes of water during disposal.
Alternative Names:	SELL

APPLICATIONS

Applications:	FCM
----------------------	-----

RECOMMENDED CONCENTRATION*Please Note: Optimal concentrations/dilutions should be determined by the end user.*

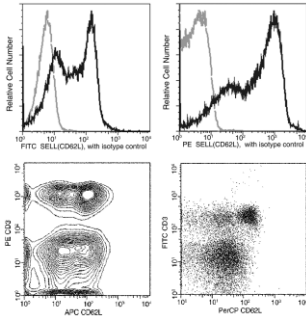
CD62L / L-Selectin / SELL Antibody (PE), Rabbit MAb

Catalog Number: 50045-R414-P



Sino Biological
Biological Solution Specialist

EliteRmab® is a registered trademark of Sino Biological Inc.



Flow cytometric analysis of CD62L expression on spleen lymphocytes.

Flow cytometry was performed on a BD FACSCalibur flow cytometry system. Please refer to www.sinobiological.com/Flow-Cytometry-FACS-Protocols-a-750.html for technical protocols.