

**CD83 / HB15 Antibody (FITC), Rabbit MAb**

Catalog Number: 50694-R134-F

EliteRmab® is a registered trademark of Sino Biological Inc.

GENERAL INFORMATION	
<b>Immunogen:</b>	Recombinant Mouse CD83 / HB15 Protein (Catalog#50694-M08H)
<b>Reagents:</b>	FITC-conjugated Rabbit monoclonal antibody
<b>Preparation</b>	This antibody was obtained from a rabbit immunized with purified, recombinant Mouse CD83 / HB15 (rM CD83 / HB15; Catalog#50694-M08H; O88324; Met1-Arg133) and conjugated with FITC under optimum conditions, the unreacted FITC was removed.
<b>Ig Type:</b>	Rabbit IgG
<b>Clone ID:</b>	134
<b>Specificity:</b>	Mouse CD83 / HB15
<b>Concentration:</b>	10 µl/Test, 0.1 mg/ml
<b>Formulation:</b>	Aqueous solution containing 0.5% BSA and 0.03%ProClin300
<b>Storage:</b>	This antibody can be stored at 2°C-8°C for twelve months without detectable loss of activity. Protected from prolonged exposure to light. Do not freeze !
<b>Alternative Names:</b>	CD83
APPLICATIONS	
<b>Applications:</b>	FCM

*Please Note: Optimal concentrations/dilutions should be determined by the end user.***For Research Use Only. Not for use in diagnostic or therapeutic procedures.**

Tel: +86-400-890-9989 (Global), +1-215-583-7898 (USA), +49(0)6196 9678656 (Europe)

Website: <http://www.sinobiological.com>

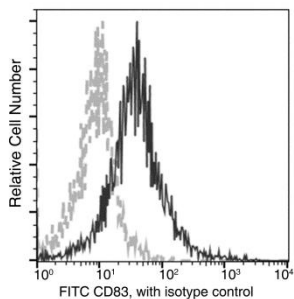
# CD83 / HB15 Antibody (FITC), Rabbit MAb

Catalog Number: 50694-R134-F



Sino Biological  
Biological Solution Specialist

EliteRmab® is a registered trademark of Sino Biological Inc.



Flow cytometric analysis of Mouse CD83 expression on LPS-stimulated BABL/c splenocytes. Cells were stained with FITC-conjugated anti-Mouse CD83. The fluorescence histograms were derived from gated events with the forward and side light-scatter characteristics of intact cells.

Flow cytometry was performed on a BD FACSCalibur flow cytometry system. Please refer to [www.sinobiological.com/Flow-Cytometry-FACS-Protocols-a-750.html](http://www.sinobiological.com/Flow-Cytometry-FACS-Protocols-a-750.html) for technical protocols.

**For Research Use Only. Not for use in diagnostic or therapeutic procedures.**

**Tel: +86-400-890-9989 (Global), +1-215-583-7898 (USA), +49(0)6196 9678656 (Europe)**

**Website: <http://www.sinobiological.com>**