

**IFNG / Interferon Gamma Antibody
(PE), Rabbit MAb**

Catalog Number: 50709-R348-P

EliteRmab® is a registered trademark of Sino Biological Inc.

GENERAL INFORMATION	
Immunogen:	Recombinant Mouse IFNG / Interferon Gamma Protein (Catalog#50709-MNAH)
Reagents:	PE-conjugated Rabbit monoclonal antibody
Preparation	This antibody was obtained from a rabbit immunized with purified, recombinant Mouse IFNG / Interferon Gamma (rM IFNG / Interferon Gamma; Catalog#50709-MNAH; NP_032363.1; Met1-Cys155) and conjugated with PE under optimum conditions, the unreacted PE was removed.
Ig Type:	Rabbit IgG
Clone ID:	348
Specificity:	Mouse IFNG / Interferon Gamma
Concentration:	5 µl/Test, 0.1 mg/ml
Formulation:	Aqueous solution containing 0.5% BSA and 0.03%ProClin300
Storage:	This antibody can be stored at 2°C-8°C for twelve months without detectable loss of activity. Protected from prolonged exposure to light. Do not freeze !
Alternative Names:	IFNG
APPLICATIONS	
Applications:	FCM

*Please Note: Optimal concentrations/dilutions should be determined by the end user.***For Research Use Only. Not for use in diagnostic or therapeutic procedures.**

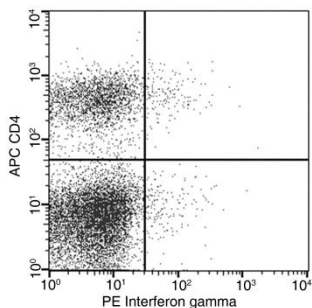
Tel: +86-400-890-9989 (Global), +1-215-583-7898 (USA), +49(0)6196 9678656 (Europe)

Website: <http://www.sinobiological.com>

**IFNG / Interferon Gamma Antibody
(PE), Rabbit MAb**

Catalog Number: 50709-R348-P

EliteRmab® is a registered trademark of Sino Biological Inc.



Flow cytometric analysis of Mouse Interferon gamma expression on BABL/c splenocytes. BABL/c splenocytes were stimulated for 4-6 hours with PMA and Ionomycin in the presence of GolgiPlug. The cells were treated according to manufacturer's manual (BD Pharmingen™ Cat. No. 554714), stained with PE-conjugated anti-Mouse Interferon gamma and APC-conjugated anti-Mouse CD4. The dot plots were derived from gated events with the forward and side light-scatter characteristics of intact cells.

Flow cytometry was performed on a BD FACSCalibur flow cytometry system. Please refer to www.sinobiological.com/Flow-Cytometry-FACS-Protocols-a-750.html for technical protocols.

For Research Use Only. Not for use in diagnostic or therapeutic procedures.

Tel: +86-400-890-9989 (Global), +1-215-583-7898 (USA), +49(0)6196 9678656 (Europe)

Website: <http://www.sinobiological.com>