

**IFNG / Interferon Gamma Antibody  
(FITC), Rabbit MAb**

Catalog Number: 50709-R373-F

EliteRmab® is a registered trademark of Sino Biological Inc.

**GENERAL INFORMATION**

<b>Immunogen:</b>	Recombinant Mouse IFNG / Interferon Gamma Protein (Catalog#50709-MNAH)
<b>Reagents:</b>	FITC-conjugated Rabbit monoclonal antibody
<b>Preparation</b>	This antibody was obtained from a rabbit immunized with purified, recombinant Mouse IFNG / Interferon Gamma (rM IFNG / Interferon Gamma; Catalog#50709-MNAH; NP_032363.1; Met1-Cys155) and conjugated with FITC under optimum conditions, the unreacted FITC was removed.
<b>Ig Type:</b>	Rabbit IgG
<b>Clone ID:</b>	373
<b>Specificity:</b>	Mouse IFNG / Interferon Gamma
<b>Concentration:</b>	5 µl/Test, 0.1 mg/ml
<b>Formulation:</b>	Aqueous solution containing 0.5% BSA and 0.03%ProClin300
<b>Storage:</b>	This antibody can be stored at 2°C-8°C for twelve months without detectable loss of activity. Protected from prolonged exposure to light. Do not freeze !
<b>Alternative Names:</b>	IFNG

**APPLICATIONS**

<b>Applications:</b>	FCM
----------------------	-----

*Please Note: Optimal concentrations/dilutions should be determined by the end user.***For Research Use Only. Not for use in diagnostic or therapeutic procedures.**

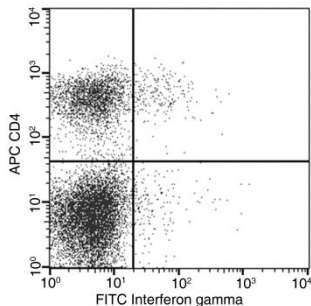
Tel: +86-400-890-9989 (Global), +1-215-583-7898 (USA), +49(0)6196 9678656 (Europe)

Website: <http://www.sinobiological.com>

**IFNG / Interferon Gamma Antibody  
(FITC), Rabbit MAb**

Catalog Number: 50709-R373-F

EliteRmab® is a registered trademark of Sino Biological Inc.



Flow cytometric analysis of Mouse Interferon gamma expression on BABL/c splenocytes. BABL/c splenocytes were stimulated for 4-6 hours with PMA and Ionomycin in the presence of GolgiPlug. The cells were treated according to manufacturer's manual (BD Pharmingen™ Cat. No. 554714), stained with FITC-conjugated anti-Mouse Interferon gamma and APC-conjugated anti-Mouse CD4. The dot plots were derived from gated events with the forward and side light-scatter characteristics of intact cells.

Flow cytometry was performed on a BD FACSCalibur flow cytometry system. Please refer to [www.sinobiological.com/Flow-Cytometry-FACS-Protocols-a-750.html](http://www.sinobiological.com/Flow-Cytometry-FACS-Protocols-a-750.html) for technical protocols.

**For Research Use Only. Not for use in diagnostic or therapeutic procedures.**

**Tel: +86-400-890-9989 (Global), +1-215-583-7898 (USA), +49(0)6196 9678656 (Europe)**

**Website: <http://www.sinobiological.com>**