



Catalog Number: 51061-R300

EliteRmab® is a registered trademark of Sino Biological Inc.

GENERAL INFORMATION	
<b>Immunogen:</b>	Recombinant Mouse IL2 Protein (Catalog#51061-MNAE)
<b>Preparation</b>	This antibody was obtained from a rabbit immunized with purified, recombinant Mouse IL2 (rM IL2; Catalog#51061-MNAE; P04351; Ala21-Gln169).
<b>Ig Type:</b>	Rabbit IgG
<b>Clone ID:</b>	300
<b>Specificity:</b>	Mouse IL2
<b>Formulation:</b>	0.2 µm filtered solution in PBS
<b>Storage:</b>	This antibody can be stored at 2°C-8°C for one month without detectable loss of activity. Antibody products are stable for twelve months from date of receipt when stored at -20°C to -80°C. Preservative-Free. Avoid repeated freeze-thaw cycles.
<b>Alternative Names:</b>	IL2
APPLICATIONS	
<b>Applications:</b>	FCM
RECOMMENDED CONCENTRATION	
<b>Flow Cytometry</b>	FCM: 1:25-1:100

**Please Note: Optimal concentrations/dilutions should be determined by the end user.**

**For Research Use Only. Not for use in diagnostic or therapeutic procedures.**

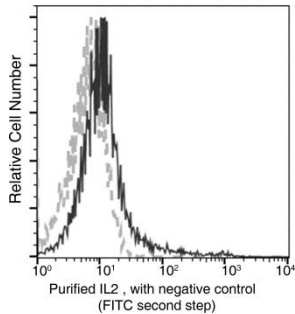
**Tel: +86-400-890-9989 (Global), +1-215-583-7898 (USA), +49(0)6196 9678656 (Europe)**

**Website: <http://www.sinobiological.com>**



Catalog Number: 51061-R300

EliteRmab® is a registered trademark of Sino Biological Inc.



Flow cytometric analysis of Mouse IL2 expression on BABL/c splenocytes. The cells were stimulated for 4-6 hours with PMA and Ionomycin in the presence of GolgiPlug. The cells were treated according to manufacturer's manual (BD Pharmingen™ Cat. No. 554714), stained with purified anti-Mouse IL2, then a FITC-conjugated second step antibody. The dot plots were derived from gated events with the forward and side light-scatter characteristics of intact cells.

Flow cytometry was performed on a BD FACSCalibur flow cytometry system. Please refer to [www.sinobiological.com/Flow-Cytometry-FACS-Protocols-a-750.html](http://www.sinobiological.com/Flow-Cytometry-FACS-Protocols-a-750.html) for technical protocols.

**For Research Use Only. Not for use in diagnostic or therapeutic procedures.**

**Tel: +86-400-890-9989 (Global), +1-215-583-7898 (USA), +49(0)6196 9678656 (Europe)**

**Website: <http://www.sinobiological.com>**