

**Interleukin-2 / IL-2 Antibody (FITC),
Rabbit MAb**

Catalog Number: 51061-R449-F

EliteRmab® is a registered trademark of Sino Biological Inc.

GENERAL INFORMATION

Immunogen:	Recombinant Mouse Interleukin-2 / IL-2 Protein (Catalog#51061-MNAE)
Reagents:	FITC-conjugated Rabbit monoclonal antibody
Preparation	This antibody was obtained from a rabbit immunized with purified, recombinant Mouse Interleukin-2 / IL-2 (rM Interleukin-2 / IL-2; Catalog#51061-MNAE; P04351; Ala21-Gln169) and conjugated with FITC under optimum conditions, the unreacted FITC was removed.
Ig Type:	Rabbit IgG
Clone ID:	449
Specificity:	Mouse Interleukin-2 / IL-2
Concentration:	5 µl/Test, 0.1 mg/ml
Formulation:	PBS solution containing 0.5% BSA and 0.03%ProClin300
Storage:	This antibody can be stored at 2°C-8°C for twelve months without detectable loss of activity. Protected from prolonged exposure to light. Do not freeze !
Alternative Names:	IL2

APPLICATIONS

Applications:	FCM
----------------------	-----

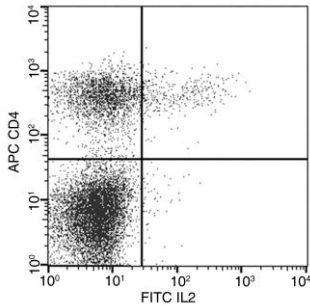
RECOMMENDED CONCENTRATION*Please Note: Optimal concentrations/dilutions should be determined by the end user.*

Interleukin-2 / IL-2 Antibody (FITC), Rabbit MAb



Catalog Number: 51061-R449-F

EliteRmab® is a registered trademark of Sino Biological Inc.



Flow cytometric analysis of Mouse IL2 expression on BABL/c splenocytes. BABL/c splenocytes were stimulated for 4-6 hours with PMA and Ionomycin in the presence of GolgiPlug. The cells were treated according to manufacturer's manual (BD Pharmingen™ Cat. No. 554714), stained with FITC-conjugated anti-Mouse IL2 and APC-conjugated anti-Mouse CD4. The dot plots were derived from gated events with the forward and side light-scatter characteristics of intact cells.

Flow cytometry was performed on a BD FACSCalibur flow cytometry system. Please refer to www.sinobiological.com/Flow-Cytometry-FACS-Protocols-a-750.html for technical protocols.