



Catalog Number: 51061-R449

EliteRmab® is a registered trademark of Sino Biological Inc.

GENERAL INFORMATION	
Immunogen:	Recombinant Mouse IL2 Protein (Catalog#51061-MNAE)
Preparation	This antibody was obtained from a rabbit immunized with purified, recombinant Mouse IL2 (rM IL2; Catalog#51061-MNAE; P04351; Ala21-Gln169).
Ig Type:	Rabbit IgG
Clone ID:	449
Specificity:	Mouse IL2
Formulation:	0.2 µm filtered solution in PBS
Storage:	This antibody can be stored at 2°C-8°C for one month without detectable loss of activity. Antibody products are stable for twelve months from date of receipt when stored at -20°C to -80°C. Preservative-Free. Avoid repeated freeze-thaw cycles.
Alternative Names:	IL2
APPLICATIONS	
Applications:	FCM
RECOMMENDED CONCENTRATION	
Flow Cytometry	FCM: 1:25-1:100

Please Note: Optimal concentrations/dilutions should be determined by the end user.

For Research Use Only. Not for use in diagnostic or therapeutic procedures.

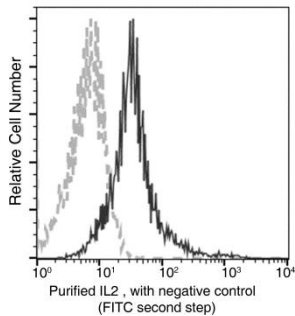
Tel: +86-400-890-9989 (Global), +1-215-583-7898 (USA), +49(0)6196 9678656 (Europe)

Website: <http://www.sinobiological.com>



Catalog Number: 51061-R449

EliteRmab® is a registered trademark of Sino Biological Inc.



Flow cytometric analysis of Mouse IL2 expression on BABL/c splenocytes. The cells were stimulated for 4-6 hours with PMA and Ionomycin in the presence of GolgiPlug. The cells were treated according to manufacturer's manual (BD Pharmingen™ Cat. No. 554714), stained with purified anti-Mouse IL2, then a FITC-conjugated second step antibody. The dot plots were derived from gated events with the forward and side light-scatter characteristics of intact cells.

Flow cytometry was performed on a BD FACSCalibur flow cytometry system. Please refer to www.sinobiological.com/Flow-Cytometry-FACS-Protocols-a-750.html for technical protocols.

For Research Use Only. Not for use in diagnostic or therapeutic procedures.

Tel: +86-400-890-9989 (Global), +1-215-583-7898 (USA), +49(0)6196 9678656 (Europe)

Website: <http://www.sinobiological.com>