

EGFR / HER1 / ErbB1 Antibody, Rabbit PAb, Antigen Affinity Purified



Sino Biological
Biological Solution Specialist

Catalog Number: 51091-T52

GENERAL INFORMATION	
Immunogen:	Recombinant Mouse EGFR / HER1 / ErbB1 Protein (Catalog#51091-M08H)
Preparation	Produced in rabbits immunized with purified, recombinant Mouse EGFR / HER1 / ErbB1 (rM EGFR / HER1 / ErbB1; Catalog#51091-M08H; Q01279; Met1-Ser647). EGFR / HER1 / ErbB1 specific IgG was purified by Mouse EGFR / HER1 / ErbB1 affinity chromatography.
Ig Type:	Rabbit IgG
Specificity:	Mouse EGFR / HER1 / ErbB1
Formulation:	0.2 µm filtered solution in PBS
Storage:	This antibody can be stored at 2°C-8°C for one month without detectable loss of activity. Antibody products are stable for twelve months from date of receipt when stored at -20°C to -80°C. Preservative-Free. Sodium azide is recommended to avoid contamination (final concentration 0.05%-0.1%). It is toxic to cells and should be disposed of properly. Avoid repeated freeze-thaw cycles.
APPLICATIONS	
Applications:	WB,ELISA,IP
RECOMMENDED CONCENTRATION	
Western Blot	WB: 1:500-1:1000
Immunoprecipitation	IP: 0.2-1 µL/mg of lysate
ELISA	ELISA: 1:25000-1:50000 This antibody can be used at 1:25000-1:50000 with the appropriate secondary reagents to detect Mouse EGFR / HER1 / ErbB1.

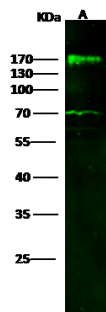
Please Note: Optimal concentrations/dilutions should be determined by the end user.

EGFR / HER1 / ErbB1 Antibody, Rabbit PAb, Antigen Affinity Purified



Sino Biological
Biological Solution Specialist

Catalog Number: 51091-T52



Anti-EGFR rabbit polyclonal antibody at 1:500 dilution

Lane A: A431 Whole Cell Lysate

Lysates/proteins at 30 µg per lane.

Secondary

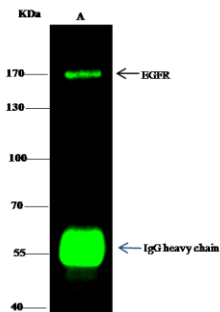
Goat Anti-Rabbit IgG H&L (Dylight800) at 1/10000 dilution.

Developed using the Odyssey technique.
Performed under reducing conditions.

Predicted band size: 170 kDa

Observed band size: 170 kDa

(We are unsure as to the identity of these extra bands.)



Mouse EGFR was immunoprecipitated using:
Lane A: 0.5 mg Hela Whole Cell Lysate

1 µL anti-Mouse EGFR rabbit polyclonal antibody and 15 µl of 50 % Protein G agarose.

Primary antibody:

Anti-Mouse EGFR rabbit polyclonal antibody, at 1:350 dilution

Secondary antibody:

Dylight 800-labeled antibody to rabbit IgG (H+L), at 1:5000 dilution

Developed using the odssey technique.
Performed under reducing conditions.

Predicted band size: 170 kDa

Observed band size: 170 kDa