

SARS-CoV-2 Nucleocapsid Antibody, Mouse MAb



Sino Biological
Biological Solution Specialist

Catalog Number: 68097-MM186

GENERAL INFORMATION	
Immunogen:	Recombinant SARS-CoV-2 Nucleocapsid CTD Protein (Catalog#40588-V07E5)
Preparation	This antibody was produced from a hybridoma resulting from the fusion of a mouse myeloma with B cells obtained from a mouse immunized with purified, recombinant SARS-CoV-2 Nucleocapsid CTD Protein (Catalog#40588-V07E5; YP_009724397.2; Lys248-Pro365). The IgG fraction of the cell culture supernatant was purified by Protein A affinity chromatography.
Clone ID:	186
Ig Type:	Mouse IgG1
Specificity	SARS-CoV-2 Nucleocapsid Protein Has cross-reactivity in WB with SARS-CoV-2 Nucleocapsid Protein (Cat# 40588-V08B) Has cross-reactivity in ELISA with SARS-CoV-2 Nucleocapsid Protein (Cat# 40588-V07E) SARS-CoV-2 Nucleocapsid CTD Protein (Cat# 40588-V07E5) SARS-CoV-2 Nucleocapsid (aa 248-407) Protein (Cat# 40588-V07E6) SARS-CoV-2 Nucleocapsid (R203K, G204R) Protein (Cat# 40588-V07E1) SARS-CoV-2 Nucleocapsid (P13L) Protein (Cat# 40588-V07E2) SARS-CoV-2 Nucleocapsid (D3L, R203K, G204R, S235F) Protein (Cat# 40588-V07E7) SARS-CoV-2 Nucleocapsid (D3L, S235F) Protein (Cat# 40588-V07E8) SARS-CoV-2 Nucleocapsid (T205I) Protein (Cat# 40588-V07E9) SARS-CoV-2 Nucleocapsid (P80R) Protein (Cat# 40588-V07E11) SARS-CoV-2 Nucleocapsid (A220V) Protein (Cat# 40588-V07E13) SARS-CoV-2 Nucleocapsid (P199L, M234I) Protein (Cat# 40588-V07E18) SARS-CoV-2 Nucleocapsid (R203M, D377Y) Protein (Cat# 40588-V07E20) SARS-CoV-2 Nucleocapsid (A119S, R203K, G204R, M234I) Protein (Cat# 40588-V07E21) SARS-CoV-2 Nucleocapsid (P67S, P199L) Protein (Cat# 40588-V07E22) SARS-CoV-2 Nucleocapsid (P13L, T205I, A220V) Protein (Cat# 40588-V07E24) SARS-CoV-2 Nucleocapsid (P80R, A119S, R203K, G204R, M234I) Protein (Cat# 40588-V07E25) SARS-CoV-2 Nucleocapsid (P67S, P199L, M234I) Protein (Cat# 40588-V07E27) SARS-CoV-2 Nucleocapsid (D63G, R203M, D377Y) Protein (Cat# 40588-V07E29) No cross-reactivity in ELISA with SARS-CoV-2 Nucleocapsid NTD Protein (Cat# 40588-V07E10)
Formulation:	0.2 µm filtered solution in PBS
Storage:	This antibody can be stored at 2°C-8°C for one month without detectable loss of activity. Antibody products are stable for twelve months from date of receipt when stored at -20°C to -80°C. Preservative-Free.
APPLICATIONS	
Applications:	WB,ELISA IHC, FCM, IF, IP et al. applications haven't been validated. (Antibody's applications haven't been validated with corresponding virus positive samples. Optimal concentrations/dilutions should be determined by the end user.)
RECOMMENDED CONCENTRATION	
Western Blot	WB: 1:500-1:2000
ELISA	ELISA: 1:1000-1:2000

Please Note: Optimal concentrations/dilutions should be determined by the end user.

Manufactured By Sino Biological Inc.

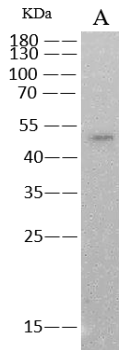
Tel: 215-583-7898 (US); +86-400-890-9989(Global) • <http://www.sinobiological.com>

SARS-CoV-2 Nucleocapsid Antibody, Mouse MAb



Sino Biological
Biological Solution Specialist

Catalog Number: 68097-MM186



Anti-SARS-CoV-2 Nucleocapsid mouse monoclonal antibody at 1:1000 dilution.

Sample: SARS-CoV-2 (2019-nCoV)
Nucleocapsid-His recombinant
Protein(Cat#40588-V08B)
Lane A: 10ng

Secondary

Goat Anti-Mouse IgG (H+L)/HRP at 1/10000 dilution

Developed using the ECL technique.
Performed under reducing conditions.

Manufactured By Sino Biological Inc.

Tel: 215-583-7898 (US); +86-400-890-9989(Global) ● <http://www.sinobiological.com>