

# CD32b / Fc gamma RIIB / FCGR2B Antibody, Rabbit PAb, Antigen Affinity Purified

Catalog Number: 80018-RP02



Sino Biological  
Biological Solution Specialist

## GENERAL INFORMATION

<b>Immunogen:</b>	Recombinant Rat CD32b / Fc gamma RIIB protein (Catalog#80018-R08H)
<b>Preparation</b>	Produced in rabbits immunized with purified, recombinant Rat CD32b / Fc gamma RIIB (rR CD32b / Fc gamma RIIB; Catalog#80018-R08H; Q63203-1; Met 1-Pro 212). CD32b / Fc gamma RIIB specific IgG was purified by Rat CD32b / Fc gamma RIIB affinity chromatography.
<b>Ig Type:</b>	Rabbit IgG
<b>Specificity:</b>	Rat CD32b / Fc gamma RIIB
<b>Formulation:</b>	0.2 µm filtered solution in PBS
<b>Storage:</b>	This antibody can be stored at 2°C-8°C for one month without detectable loss of activity. Antibody products are stable for twelve months from date of receipt when stored at -20°C to -80°C. Preservative-Free. Sodium azide is recommended to avoid contamination (final concentration 0.05%-0.1%). It is toxic to cells and should be disposed of properly. Avoid repeated freeze-thaw cycles.

## APPLICATIONS

<b>Applications:</b>	ELISA, IHC-P
----------------------	--------------

## RECOMMENDED CONCENTRATION

<b>IHC-P</b>	IHC-P: 1:500-1:2000
<b>ELISA</b>	ELISA: 1:5000-1:10000 This antibody can be used at 1:5000-1:10000 with the appropriate secondary reagents to detect Rat FCGR2B/CD32b.

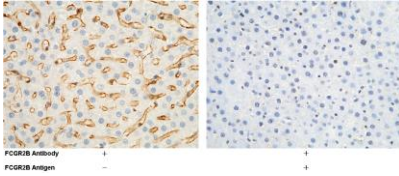
**Please Note: Optimal concentrations/dilutions should be determined by the end user.**

**CD32b / Fc gamma RIIB / FCGR2B  
Antibody, Rabbit PAb, Antigen  
Affinity Purified**

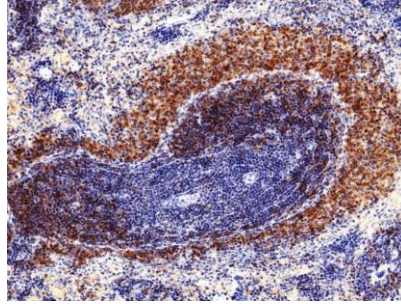
Catalog Number: 80018-RP02



Sino Biological  
Biological Solution Specialist



FCGR2B Antibody  
FCGR2B Antigen



Immunochemical staining of rat FCGR2B in rat liver with rabbit polyclonal antibody (1:1000, formalin-fixed paraffin embedded sections). Positive staining was localized to hepatic sinusoid. The left panel: tissue incubated with primary antibody; The right panel: tissue incubated with the mixture of primary antibody and antigen (recombinant protein).

Immunochemical staining of human FCGR2B in human kidney with rabbit polyclonal antibody (1:1000, formalin-fixed paraffin embedded sections).