

# EGFR / HER1 / ErbB1 Antibody, Rabbit PAb, Antigen Affinity Purified



Sino Biological  
Biological Solution Specialist

Catalog Number: 80100-T52

## GENERAL INFORMATION

<b>Immunogen:</b>	Recombinant Rat EGFR / HER1 / ErbB1 protein (Catalog#80100-R08H)
<b>Preparation</b>	Produced in rabbits immunized with purified, recombinant Rat EGFR / HER1 / ErbB1 (Catalog#80100-R08H; E7CXR8; Met1-Ser646). EGFR / HER1 / ErbB1 specific IgG was purified by Rat EGFR / HER1 / ErbB1 affinity chromatography.
<b>Ig Type:</b>	Rabbit IgG
<b>Specificity:</b>	Rat EGFR / HER1 / ErbB1
<b>Formulation:</b>	0.2 µm filtered solution in PBS
<b>Storage:</b>	This antibody can be stored at 2°C-8°C for one month without detectable loss of activity. Antibody products are stable for twelve months from date of receipt when stored at -20°C to -80°C. Preservative-Free. Sodium azide is recommended to avoid contamination (final concentration 0.05%-0.1%). It is toxic to cells and should be disposed of properly. Avoid repeated freeze-thaw cycles.

## APPLICATIONS

<b>Applications:</b>	WB,ELISA
----------------------	----------

## RECOMMENDED CONCENTRATION

<b>Western Blot</b>	WB: 1:500-1:1000
<b>ELISA</b>	ELISA: 1:25000-1:50000 This antibody can be used at 1:25000-1:50000 with the appropriate secondary reagents to detect Rat EGFR / HER1 / ErbB1.

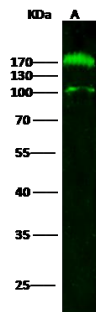
**Please Note: Optimal concentrations/dilutions should be determined by the end user.**

# EGFR / HER1 / ErbB1 Antibody, Rabbit PAb, Antigen Affinity Purified



Sino Biological  
Biological Solution Specialist

Catalog Number: 80100-T52



Anti-EGFR rabbit polyclonal antibody at 1:500 dilution

Lane A: A431 Whole Cell Lysate

Lysates/proteins at 30 µg per lane.

Secondary

Goat Anti-Rabbit IgG H&L (Dylight800) at 1/10000 dilution.

Developed using the Odyssey technique.

Performed under reducing conditions.

Predicted band size:170 kDa

Observed band size:170 kDa

(We are unsure as to the identity of these extra bands.)