

CD16 / FCGR3 Antibody, Rabbit PAb, Antigen Affinity Purified



Sino Biological
Biological Solution Specialist

Catalog Number: 90013-RP02

GENERAL INFORMATION

Immunogen:	Recombinant Rhesus CD16 / FCGR3 protein (Catalog#90013-C08H)
Preparation	Produced in rabbits immunized with purified, recombinant Rhesus CD16 / FCGR3 (Catalog#90013-C08H; NP_001258584.1; Met1-Gly206). CD16 / FCGR3 specific IgG was purified by Rhesus CD16 / FCGR3 affinity chromatography.
Ig Type:	Rabbit IgG
Specificity:	Rhesus CD16 / FCGR3
Formulation:	0.2 µm filtered solution in PBS
Storage:	This antibody can be stored at 2°C-8°C for one month without detectable loss of activity. Antibody products are stable for twelve months from date of receipt when stored at -20°C to -80°C. Preservative-Free. Sodium azide is recommended to avoid contamination (final concentration 0.05%-0.1%). It is toxic to cells and should be disposed of properly. Avoid repeated freeze-thaw cycles.

APPLICATIONS

Applications:	ELISA, IHC-P
----------------------	--------------

RECOMMENDED CONCENTRATION

IHC-P	IHC-P: 1:2500-1:10000
ELISA	ELISA: 1:5000-1:10000 This antibody can be used at 1:5000-1:10000 with the appropriate secondary reagents to detect Rhesus FCGR3.

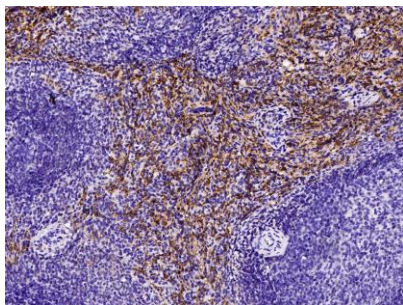
Please Note: Optimal concentrations/dilutions should be determined by the end user.

CD16 / FCGR3 Antibody, Rabbit PAb, Antigen Affinity Purified

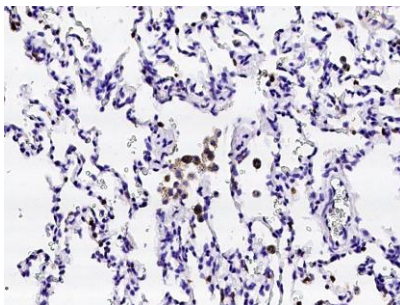


Sino Biological
Biological Solution Specialist

Catalog Number: 90013-RP02



Immunochemical staining of Rhesus macaque FCGR3 in Rhesus macaque spleen with rabbit polyclonal antibody (1:5000, formalin-fixed paraffin embedded sections).



Immunochemical staining of Rhesus macaque FCGR3 in Rhesus macaque lung with rabbit polyclonal antibody (1:5000, formalin-fixed paraffin embedded sections).