

CD32b/FCGR2B/Fc gamma RIIB Antibody (FITC), Mouse MAb



Sino Biological
Biological Solution Specialist

Catalog Number: 90014-MM12-F

GENERAL INFORMATION

Immunogen:	Recombinant Cynomolgus CD32b/FCGR2B/Fc gamma RIIB Protein (Catalog#90014-C08H)
Reagents:	FITC-conjugated Mouse monoclonal antibody
Preparation	This antibody was produced from a hybridoma resulting from the fusion of a mouse myeloma with B cells obtained from a mouse immunized with purified, recombinant Cynomolgus CD32b/FCGR2B/Fc gamma RIIB (Catalog#90014-C08H; AAL92097.1; Met1-Pro217) and conjugated with FITC under optimum conditions, the unreacted FITC was removed.
Ig Type:	Mouse IgG1
Clone ID:	12
Specificity:	Cynomolgus CD32b/FCGR2B/Fc gamma RIIB
Concentration:	5 µl/Test, 0.1 mg/ml
Formulation:	PBS solution containing 0.5% BSA and 0.09% sodium azide
Storage:	This antibody can be stored at 2°C-8°C for twelve months without detectable loss of activity. Protected from prolonged exposure to light. Do not freeze ! Sodium azide is toxic to cells and should be disposed of properly. Flush with large volumes of water during disposal.
Alternative Names:	FCGR2B

APPLICATIONS

Applications: FCM

RECOMMENDED CONCENTRATION

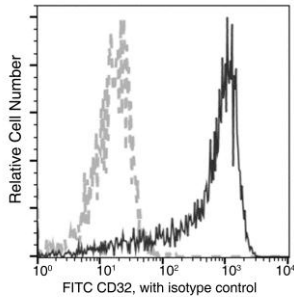
Please Note: Optimal concentrations/dilutions should be determined by the end user.

CD32b/FCGR2B/Fc gamma RIIB Antibody (FITC), Mouse MAb



Sino Biological
Biological Solution Specialist

Catalog Number: 90014-MM12-F



Flow cytometric analysis of Cynomolgus CD32 expression on Cynomolgus monocytes. Cells were stained with FITC-conjugated anti-CD32. The fluorescence histograms were derived from gated events with the forward and side light-scatter characteristics of viable monocytes.

Flow cytometry was performed on a BD FACSCalibur flow cytometry system. Please refer to www.sinobiological.com/Flow-Cytometry-FACS-Protocols-a-750.html for technical protocols.