

# CD32b/FCGR2B/Fc gamma RIIB Antibody (PE), Rabbit MAb



Catalog Number: 90014-R046-P

EliteRmab® is a registered trademark of Sino Biological Inc.

## GENERAL INFORMATION

<b>Immunogen:</b>	Recombinant Cynomolgus CD32b/FCGR2B/Fc gamma RIIB Protein (Catalog#90014-C08H)
<b>Reagents:</b>	PE-conjugated Rabbit monoclonal antibody
<b>Preparation</b>	This antibody was obtained from a rabbit immunized with purified, recombinant Cynomolgus CD32b/FCGR2B/Fc gamma RIIB ( Catalog#90014-C08H; AAL92097.1; Met1-Pro217) and conjugated with PE under optimum conditions, the unreacted PE was removed.
<b>Ig Type:</b>	Rabbit IgG
<b>Clone ID:</b>	046
<b>Specificity:</b>	Cynomolgus CD32b/FCGR2B/Fc gamma RIIB
<b>Concentration:</b>	5 µl/Test, 0.1 mg/ml
<b>Formulation:</b>	PBS solution containing 0.5% BSA and 0.09% sodium azide
<b>Storage:</b>	This antibody can be stored at 2°C-8°C for twelve months without detectable loss of activity. Protected from prolonged exposure to light. Do not freeze ! Sodium azide is toxic to cells and should be disposed of properly. Flush with large volumes of water during disposal.
<b>Alternative Names:</b>	FCGR2B

## APPLICATIONS

**Applications:** FCM

## RECOMMENDED CONCENTRATION

*Please Note: Optimal concentrations/dilutions should be determined by the end user.*

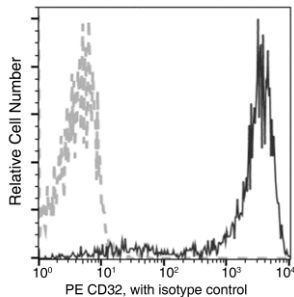
# CD32b/FCGR2B/Fc gamma RIIB Antibody (PE), Rabbit MAb

Catalog Number: 90014-R046-P



Sino Biological  
Biological Solution Specialist

EliteRmab® is a registered trademark of Sino Biological Inc.



Flow cytometric analysis of Cynomolgus CD32 expression on Cynomolgus monocytes. Cells were stained with PE-conjugated anti-CD32. The fluorescence histograms were derived from gated events with the forward and side light-scatter characteristics of viable monocytes.

Flow cytometry was performed on a BD FACSCalibur flow cytometry system. Please refer to [www.sinobiological.com/Flow-Cytometry-FACS-Protocols-a-750.html](http://www.sinobiological.com/Flow-Cytometry-FACS-Protocols-a-750.html) for technical protocols.