

# CD32b / Fc gamma RIIB Antibody, Rabbit PAb, Antigen Affinity Purified



Sino Biological  
Biological Solution Specialist

Catalog Number: 90014-RP02

## GENERAL INFORMATION

<b>Immunogen:</b>	Recombinant Cynomolgus CD32b / Fc gamma RIIB protein (Catalog#90014-C08H)
<b>Preparation</b>	Produced in rabbits immunized with purified, recombinant Cynomolgus CD32b / Fc gamma RIIB (rC CD32b / Fc gamma RIIB; Catalog#90014-C08H; AAL92097.1; Met 1-Pro 217). CD32b / Fc gamma RIIB specific IgG was purified by Cynomolgus CD32b / Fc gamma RIIB affinity chromatography.
<b>Ig Type:</b>	Rabbit IgG
<b>Specificity:</b>	Cynomolgus CD32b / Fc gamma RIIB
<b>Formulation:</b>	0.2 µm filtered solution in PBS
<b>Storage:</b>	This antibody can be stored at 2°C-8°C for one month without detectable loss of activity. Antibody products are stable for twelve months from date of receipt when stored at -20°C to -80°C. Preservative-Free. Sodium azide is recommended to avoid contamination (final concentration 0.05%-0.1%). It is toxic to cells and should be disposed of properly. Avoid repeated freeze-thaw cycles.

## APPLICATIONS

<b>Applications:</b>	ELISA, IHC-P
----------------------	--------------

## RECOMMENDED CONCENTRATION

<b>IHC-P</b>	IHC-P: 1:500-1:2000
<b>ELISA</b>	ELISA: 1:5000-1:10000 This antibody can be used at 1:5000-1:10000 with the appropriate secondary reagents to detect Cynomolgus CD32b.

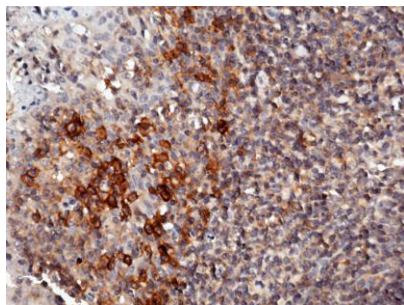
**Please Note: Optimal concentrations/dilutions should be determined by the end user.**

# CD32b / Fc gamma RIIB Antibody, Rabbit PAb, Antigen Affinity Purified

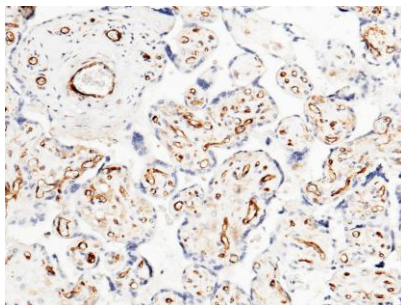


Sino Biological  
Biological Solution Specialist

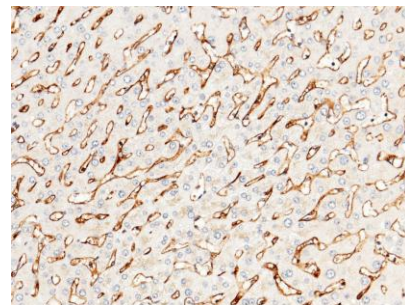
Catalog Number: 90014-RP02



Immunochemical staining of cynomolgus CD32b in human tonsil with rabbit polyclonal antibody (1:1000, formalin-fixed paraffin embedded sections).



Immunochemical staining of cynomolgus CD32b in human placenta with rabbit polyclonal antibody (1:1000, formalin-fixed paraffin embedded sections).



Immunochemical staining of cynomolgus CD32b in human liver with rabbit polyclonal antibody (1:1000, formalin-fixed paraffin embedded sections).