

2007-2018



Sino Biological
Biological Solution Specialist

50% off for Selected Expression-ready ORF Clones

The 11 anniversary of Sino Biological

- ◇ Fully sequenced Twice
- ◇ 200,000 genes products for your choice
- ◇ 26,000+ products Next-Day shipping

cDNA Clones Select Guide

	cDNA Clone	Expression-ready ORF Clone
Sequence confirmed	Yes	Yes
Expression validated	N/A	Yes
Expression host	N/A	Mammalian cell
Vector	pMD18-T/pGEM-T/pUC19	pCMV3-Vectors
Tag	N/A	Untagged, N-or C-Flag/HA/His/Myc/GFPspark®/ OFPSpark®
Application	PCR template Real-Time PCR template Gene function research	Protein overexpression Protein detection and purification Subcellular location Stable cell line construction
Unique features	Ultra Low-cost	Expression Validated

Terms and Conditions:

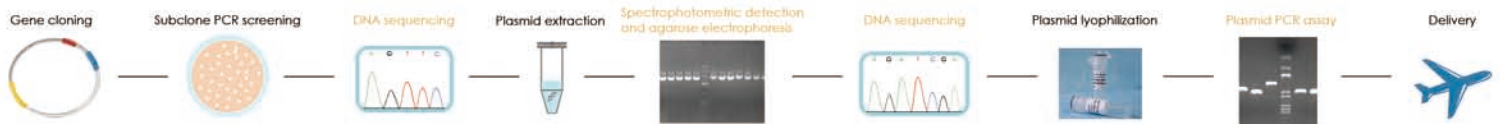
- ◇ Promotion time: 7.1.2018-12.31. 2018
- ◇ This promotion discount is limited to the online size of Sino Biological, for bulk discount, please contact Sino Biological at Order@Sinobiological.com
- ◇ All rights are reserved by Sino Biological Inc.



Key Advantages

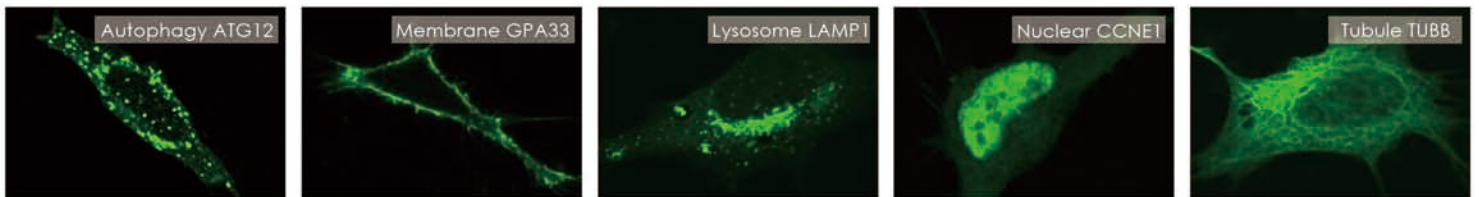
- ◇ 200,000 gene products.
- ◇ Multiple species: Human, Mouse, Rat, Monkey, Canine, Ferret, Viruse.
- ◇ Multiple tag: Tag free, C-or N-terminal Flag, Myc, His, HA, GFPspark®, OFPspark®.
- ◇ Higher protein expression level: enhanced CMV promotor.
- ◇ Full length sequence confirmation.

Strict Quality Control to Ensure the Sequence and Purity

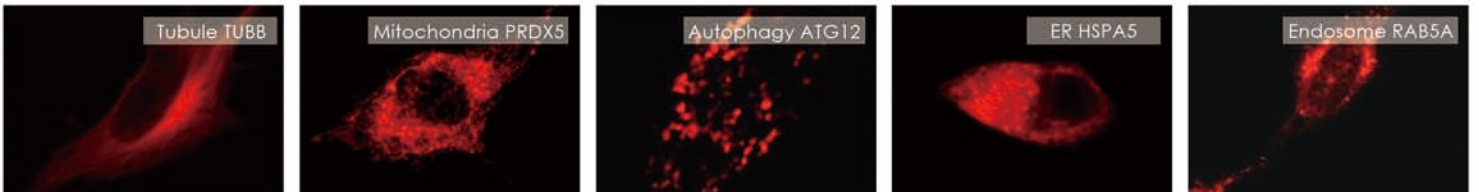


GFPspark® & OFPspark®-Brighter Fluorescent Tag

GFP (GFPspark®) Expression Validated



OFP(OFPspark®) Expression Validated



Products' Reference

Gene	Catalog No.	Journal	Title
MRPP3	HG14131-G	Nature	Mitochondrial unfolded protein response controls matrix pre-rRNA processing and translation
NP	VG40207-UT	Nat. Commun.	Comparative influenza protein interactomes identify the role of plakophilin 2 in virus restriction
CCT8	HG11492-UT	Nat. Commun.	Somatic increase of CCT8 mimics proteostasis of human pluripotent stem cells and extends C. elegans lifespan
HIF1A	HG11977-NH	Proc. Natl. Acad. Sci. U.S.A.	Glutathione adducts induced by ischemia and deletion of glutaredoxin-1 stabilize HIF-1α and improve limb revascularization
IL9	MG51302-G	Proc. Natl. Acad. Sci. U.S.A.	Glycosylation profiles determine extravasation and disease-targeting properties of armed antibodies
TNFRSF21	HG10175-CF	Bone Joint Res.	Silencing of translation initiation factor eIF3b promotes apoptosis in osteosarcoma cells

Sino Biological Inc.

Address: 31# Kechuang 7th Street, BDA, Beijing 100176, P.R.China
Email: cro-service@sinobiological.com
Phone: +86-10-58628216 ; +86-10-58628223
Fax: +86-10-58628220

Sino Biological US Inc.

Address: 1400 Liberty Ridge Drive, Suite 101, Wayne, PA 19087
Email: cro-service@sinobiological.com
Phone: 215-583-7898
Fax: 267-657-0217